

# Putzmeister

## BOOM PUMP

### ADVANTAGE



#### RS 907A Hopper

Putzmeister's EZ Clean Out RS 907A hopper is engineered for performance and easy maintenance. Offering 19.4 cu. ft. (550L) capacity, the hopper features hard-faced remixer paddles and vibrator. The unique design of the splash guard protects the unit from splattering during pumping and folds down and latches to cover the hopper during transit.



#### Fuel Economy

Switch gears and save with Putzmeister's patented Econo-Gear.™ The exclusive design allows the Mack chassis engine to run at a lower rpm, achieving less stress on wear items, lower noise levels and reduced fuel consumption. Even when pumping a full load, Econo-Gear makes a significant impact on job site safety and profitability with an estimated 10-15% savings.



#### Fully Proportional Cable Remote

Like Putzmeister's advanced radio remote technology, the standard proportional cable remote offers smoother operation and more precise positioning of booms. Unlike other proportional systems, all functions are completely independent so if the standard proportional radio remote malfunctions, the cable remote remains completely functional.

## 28Z-Meter

Truck-Mounted Concrete Boom Pump



- 89' 7" (27.31m) vertical reach
- Up to 210 yd<sup>3</sup>/hr (160m<sup>3</sup>/hr) maximum output
- Exclusive Multi-Z boom design
- Short overall length without overhang
- Frost law version available

28Z-Meter



# Putzmeister BOOM PUMP ADVANTAGE



## Better Boom Design

Lighter and more resilient, Putzmeister's "smart design" boom incorporates welding seams below the edge of maximum stress. The boom is engineered to offer the flexibility to adapt to different loads and features more straight pipe for a less stressful concrete flow and longer wear on parts. The Multi-Z configuration handles space restrictive areas and can pump even if the boom is not fully extended.



## Modular Flatpack

Fully removable, Putzmeister's modular bolt-on flatpack and hydraulic system combine versatility and servicing convenience. Pump cells can be switched out as jobs require or when maintenance is necessary. This feature also provides easier access to the S-Valve and shift cylinders.



## Frequency Hopping Radio Remote

Ensuring minimum interference with other frequency transmitters, the HBC-Radiomatic Power Boost and Frequency Hopping remote system randomly hops to one of 64 preprogrammed frequencies within a specified range every 130 milliseconds or more than 450 times per minute. Power Boost further enhances reception quality with a 50-100% signal power increase.

# 28Z-Meter

## Truck-Mounted Concrete Boom Pump Standard Features

### Boom

- 89' 7" (27.31m) vertical reach
- Versatile four-section Multi-Z boom
- Quick and easy setup on most congested job sites
- Efficiently maneuver and place concrete in hard to reach places
- Manual lubrication
- Integrated work lights

### Delivery Line

- 5" (125mm) twin-wall delivery line on all boom sections provides efficient concrete delivery
- Induction-hardened deck pipe with CCI turret elbow
- Mounted in convenient lift-out brackets for easy pipe replacement
- Standardized elbows and straight pipe sections
- Common components available in stock

### Boom Operation and Control

- Fully proportional HBC radio remote
- Smooth and precise boom positioning
- Fully proportional cable remote with 130' (40m) cable
- Gauge Port Central (GPC)
- Modular Boom Control (MBC)
- 24V control box

## Putzmeister PRO-VANTAGE<sup>®</sup> WARRANTY PLAN

The PRO-VANTAGE<sup>®</sup> Warranty Plan extends the coverage on all Putzmeister BSF boom pumps for a total of 36 months or 6,600 hours at no extra charge.

### Pedestal

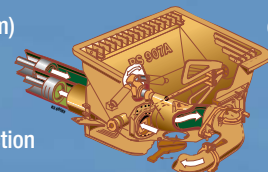
- Unique pedestal design absorbs all forces
- Rack and pinion slewing system for better weight distribution, smoother boom rotation and the potential for greater net reach
- Access openings simplify changing turret pipe
- Easy access large single-suction filter with indicator gauge
- Condensation trap in the tank for water collection
- Two spacious decks with fold-down side panels for convenient pipe and hose storage
- Manual lubrication
- Side-mounted aluminium tool boxes
- Integrated work lights
- Breakaway rear steps

### Outriggers

- Fully hydraulic outriggers
- Small outrigger footprint for easy setup in tight areas
- Front outriggers extend diagonally out and down
- Rear outriggers extend down
- Four outrigger pads in two side compartments
- Bubble level indicators

### S-Valve

- Ideal for high pressure applications and harsh mixes
- Hard faced S-Valve
- Gradual 9" to 7" (230 to 180mm) reduction on .12L and .16H pump cells; 8" to 6" (200 to 150mm) reduction on .09 pump cell
- Thick-walled valve construction



### EZ Clean Out RS 907A Hopper

- Large 19.4 cu ft (550L) capacity
- Hard-faced remixer paddles
- Vibrator
- Splash guard
- Easy discharging from a mixer truck
- Automatic lubrication
- Integrated work lights

.09 pump cell is only available with the RS 905A hopper

### Clean Out

- Fast and easy clean out
- 406 psi (28 bar) hydraulically driven water pump
- Wash out kit and hose
- Integrated 185 gallon (700L) water tank

### Concrete Pump

- 142 yd<sup>3</sup>/hr (109m<sup>3</sup>/hr) output and 1015 psi (70 bar) concrete pressure from same setup
- Choose from high pressure or high volume with the same setup
- Free flow hydraulic system for smooth, controllable pumping
- Multi-piece piston cup design
- Automatic lubrication of the concrete pistons for long service life
- Hard-chromed material cylinders
- Double proximity switches with indicator
- Fully adjustable volume control for very slow pumping with full concrete pressure and boom speed
- Lasting wear over years of use
- Modular pump control box

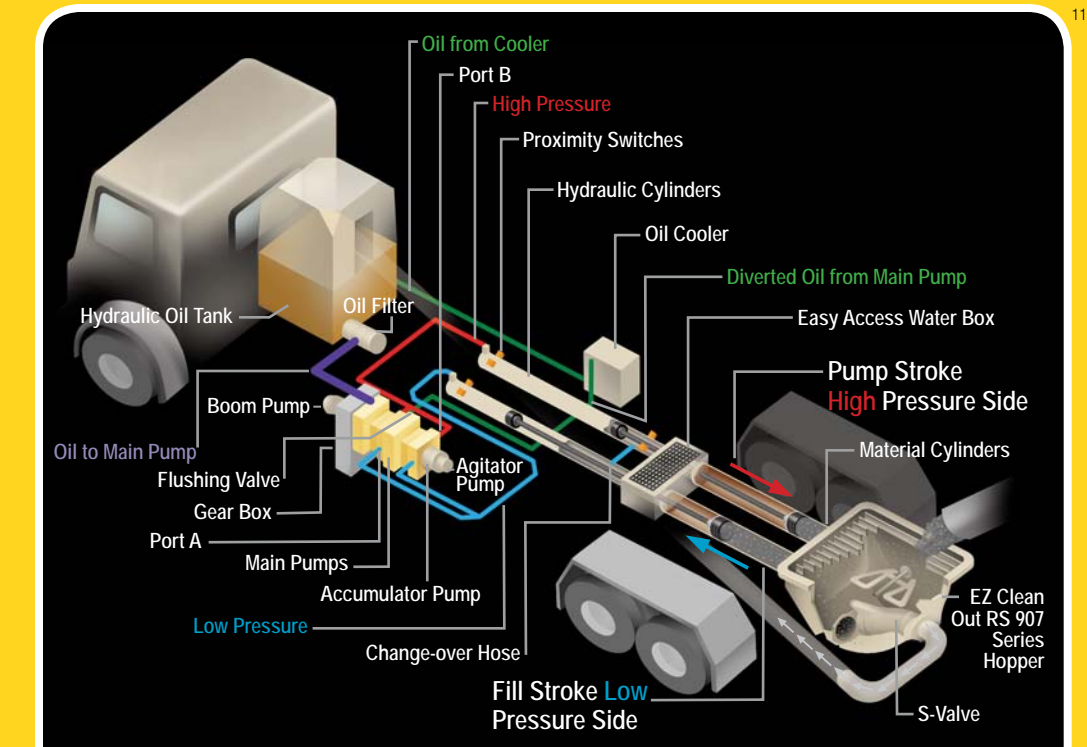


## Smaller Size, Greater Flexibility

Offering fantastic maneuverability, the 28Z-Meter features a low unfolding height and Multi-Z boom design that make negotiating congested job sites effortless. The boom can even unfold inside

a building when necessary. Convenient fold-down side panels offer easy access to deck storage. This model travels easily, sets up quickly and performs reliably pour after pour.

# Putzmeister FREE FLOW HYDRAULICS



## Putzmeister Free Flow Hydraulics in a Closed Loop System

The pumps at the heart of Putzmeister's free flow pumping system are bi-directional, variable displacement piston pumps. Depending on stroke, oil flows in a closed loop from either port A or port B on the pump to the hydraulic cylinders.

Depending on specific pump cell size, up to 20% of the oil leaves the simple closed loop system during each stroke through a flushing valve on the main pump and cycles to a cooler before it returns to the hydraulic oil tank. Removing and cooling only this minimal amount of oil is possible because, unlike an open loop system, the oil flows freely without passing through any unnecessary valves that can generate heat.

The closed loop also requires far less oil to run the system, as a larger reservoir is not necessary to cool all of the oil.

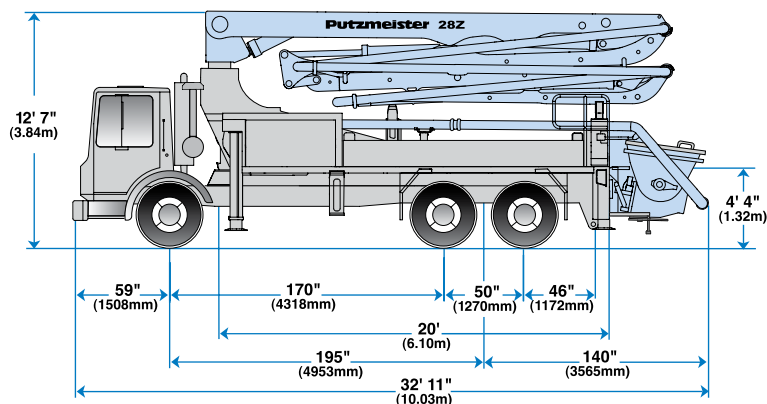
Speed and timing are also critical to superior performance. Quicker and more responsive than a hydraulic signal, the electrical system on a Putzmeister pump minimizes the time it takes to change direction at stroke end.

An electrical signal precisely synchronizes the drive cylinders with the accumulator system that controls the S-Valve in the hopper. Reserved energy in a nitrogen bladder sends a supercharged blast of oil at precisely the right moment to facilitate a smooth and fast shift of the S-Valve from one position to another.

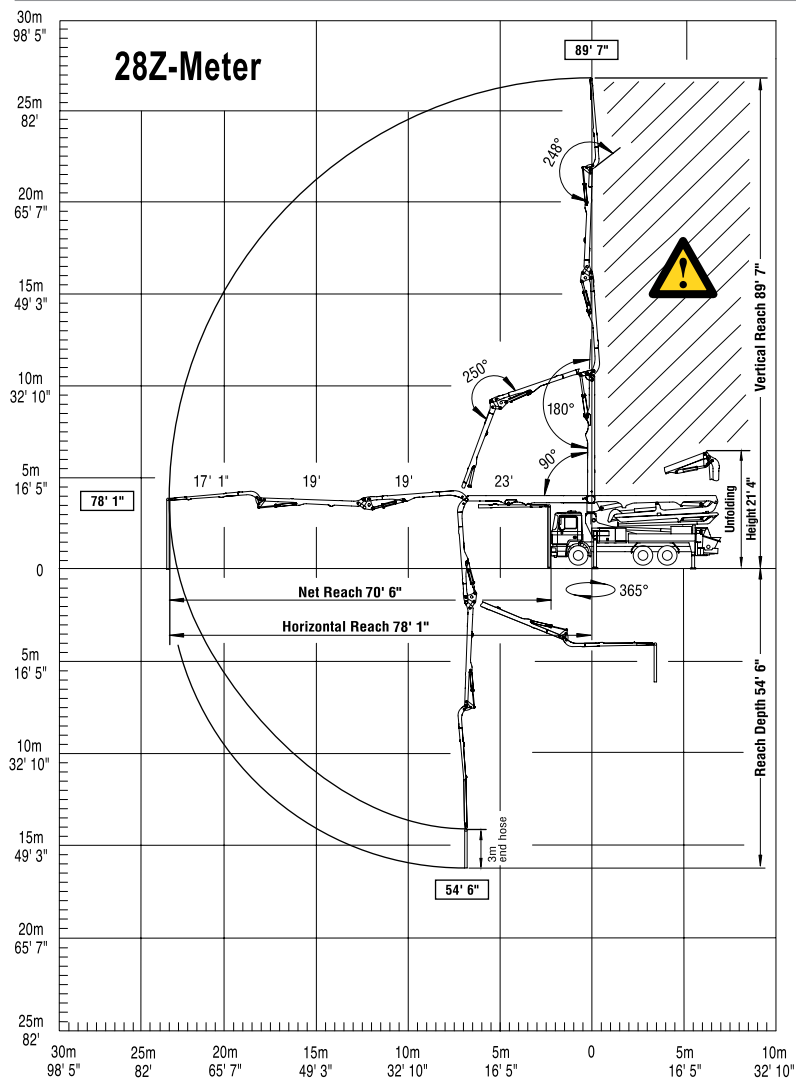
## Key Advantages of Putzmeister's Free Flow Hydraulics:

- Constant pressure on material in the delivery line ensures pumping is smooth and the flow of concrete is consistent.
- There is greater pump output due to the efficient use of all available energy.
- The intelligent design eliminates wear-inducing pressure peaks, increases service life and makes our pumps extremely powerful.
- Rapid changeover of the stroke means higher outputs, a smoother flow of concrete and less boom bounce.



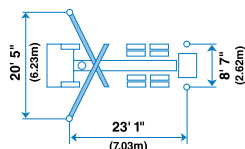


## Range Diagram



End hose not to be operated in caution area.

Photos and drawings are for illustrative purposes only.  
For available options, please refer to price list.



Authorized Distributor



Putzmeister America, Inc.  
1733 90th Street  
Sturtevant, WI 53177 USA  
Telephone (262) 886-3200  
(800) 884-7210  
Facsimile (262) 884-6338  
www.putzmeister.com



12

## 28Z-Meter Truck-Mounted Specifications

Based on Model MACK MRU 688S  
with .12L pump cell

Length	32' 11"	(10.03m)
Width	8' 2"	(2.50m)
Height	12' 7"	(3.84m)
Wheelbase	195"	(4,953mm)
Front axle weight	15,435 lbs	(7,001kg)
Rear axle weight	28,865 lbs	(13,093kg)
Approx. total weight	44,300 lbs	(20,094kg)

Weights are approximate and include pump, boom, truck, full hydraulic oil, driver and some fuel. Varies with options selected.

Dimensions will vary with different truck makes, models and specifications.

## Boom Specifications • Multi-Z Design

<b>Height &amp; Reach</b>		
Vertical reach	89' 7"	(27.31m)
Horizontal reach	78' 1"	(23.80m)
Reach from front of truck*	70' 6"	(21.49m)
Reach depth	54' 6"	(16.61m)
Unfolding height	21' 4"	(6.50m)

<b>4-Section Boom</b>		
1st section articulation	90°	
2nd section articulation	180°	
3rd section articulation	250°	
4th section articulation	248°	
1st section length	23'	(7.00m)
2nd section length	19'	(5.80m)
3rd section length	19'	(5.80m)
4th section length	17' 1"	(5.20m)

<b>General Specs</b>		
Pipeline size (ID) metric ends	5"	(125mm)
Rotation	365°	
End hose — length**	10'	(3.00m)
End hose — diameter	5"	(125mm)
Outrigger spread L-R — front telescope diagonally and extend down	20' 5"	(6.23m)
Outrigger spread L-R — rear extend down	8' 7"	(2.62m)

Pump Specifications <sup>†</sup>	28Z.12L	28Z.16H
Output — rod side	142 yd <sup>3</sup> /hr (109m <sup>3</sup> /hr)	210 yd <sup>3</sup> /hr (160m <sup>3</sup> /hr)
piston side	85 yd <sup>3</sup> /hr (65m <sup>3</sup> /hr)	146 yd <sup>3</sup> /hr (112m <sup>3</sup> /hr)
Pressure — rod side	1015 psi (70 bar)	1233 psi (85 bar)
piston side	1624 psi (112 bar) •	1885 psi (130 bar) •
Concrete cylinder diameter	9" (230mm)	9" (230mm)
Stroke length	83" (2100mm)	83" (2100mm)
Max strokes per minute —		
rod side	21	31
piston side	13	21
Volume control	0-Full	0-Full
Vibrator	Standard	Standard
Hard-chromed concrete cylinder	Standard	Standard
Hydraulic system	Free Flow	Free Flow
Hydraulic system pressure	5075 psi (350 bar)	5075 psi (350 bar)
Differential cylinder diameter	5.1" (130mm)	5.5" (140mm)
Rod diameter	3.1" (80mm)	3.1" (80mm)
Maximum size aggregate	2.5" (63mm)	2.5" (63mm)
Water tank	185 gal (700L)	185 gal (700L)

Maximum theoretical values listed

• Standard delivery line system rated at max line pressure of 1233 psi (85 bar)

\* Applies to units mounted on PMA stock truck — MACK MRU 688S

\*\* Please follow the end hose weight guidelines listed in the operators manual.

† .09 pump cell also available